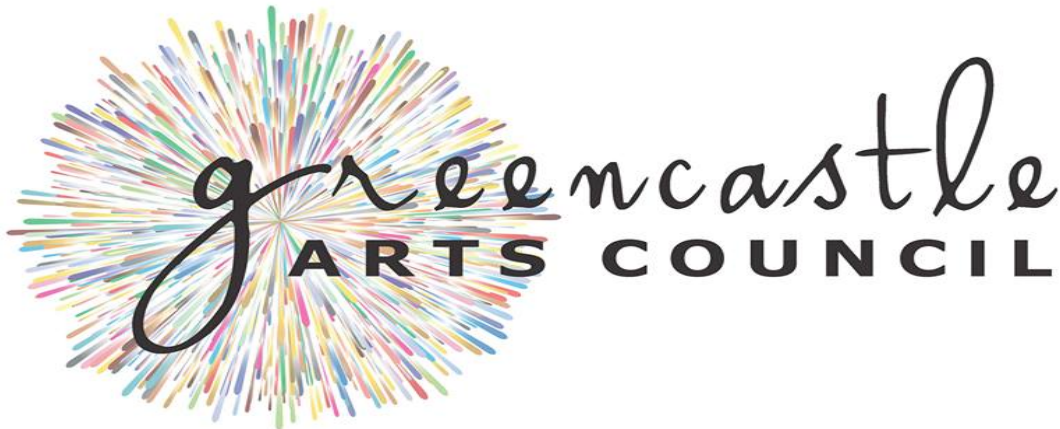


Greencastle Art Council

NEWSLETTER

Fall 2019



Promoting the Arts throughout Putnam County

The purpose of the Greencastle Arts Council is to celebrate and promote the arts and artists throughout Putnam County. We are currently supported by volunteerism and fundraising.

If you would like to become involved, please visit our website www.greencastleartscouncil.org/
Or you may call or text Lynne Tweedie at (765)720-8058.

Board Members:

Lisa Cooper

Rachel Curtis - Treasurer

Ron Dye

Barbara Fields-Timm

Lavinia Hale - Vice President

Suzanne Hassler

Lane Ralph

TL Ridgway-Woodall

Lynne Tweedie -President

In this Issue

Our Mission - Our Board Members	1
Green Light Arts Festival - Annual Celebration	3
PC Muralist - Key Detail	5
Exhibition Review - Bearing Witness	7
PC Festival Choir - Welcomes	11
Q&A Bonne Soiree Artist - Natasha Vidger	13
GAC Raffle – 2019 Fall Winners	15

What's happening in 2020?

- Call-to-Entry for local adult artists will begin mid-January and remain open until mid-March. The Best of Putnam County Artists Exhibition will be hosted by the Greencastle Arts Council in cooperation with the Putnam County Museum. The exhibition will be open to the public for the months of July & August 2020 during museum open hours.
- Spring Concert, Sunday, May 3rd, the Festival Choir will perform Brahms's *Ein deutsches Requiem (A German Requiem)* with the combined DePauw University Orchestra and Choirs.
- The annual GAC Members' meeting and Bonne Soiree fundraising event will be held on June 27th at the Putnam County Museum. Attendees will have an exclusive premiere view of the upcoming adult exhibition.
- The GAC First Friday activities on the square will run from May to October. Activities encourage the development of artistic processes, promote conversations about the current Makers' Movement, and enable interested individuals of all ages to create a personalized work of art. (All activities are managed by local artist volunteers, and any associated cost of materials are paid for by GAC annual membership dues, donations, and community grants.)

Please visit our home page, or view our calendar for current information on events, activities, and opportunities.

<http://www.greencastleartscouncil.org/>
<http://www.greencastleartscouncil.org/calendar/>

Annual Green Light Arts Festival

Lynne Tweedie

For the third year in a row the Greencastle Arts Council was honored to partner with Putnam County Comprehensive Services in planning their annual art show and sale where community artists and artisans from PCCS Green Light Studio exhibited and sold their work together. This year, the show, renamed The Annual Green Light Arts Festival, extended to two days and moved from an inside event in early November to an outside event in mid-September.

Informed by Andrew Ranck's extensive theatre experience in stage management, the event's layout provided easy access for patrons and participants. Visitors enjoyed great weather, food trucks, a beer garden, five musical acts, 40 regional artists, as well as activities for children, at the campus of PCCS located at 620 Tennessee Street in Greencastle. There was plenty of room for dining, performers, kids' activities, and vendors. On Saturday morning, the Greencastle



Courtesy of Stacie Langdon

Farmers' Market moved their wares to nearby Wood Street.

Artists that are registered on the Greencastle Arts Council's Artists' directory, got first crack at space in one of two large tents provided by the PCCS. Additionally, other vendors set up their own tents.

Planning began early in 2019 with PCCS Director Andrew Ranck and Marketing Director, Stacie Langdon, as well as other community members including the Greencastle Arts Council board members Lisa Cooper and Lynne Tweedie, Brian Cox of Main Street, and Eric Freeman and Suzanne Hassler from the Putnam County Visitors Bureau. The GAC connected PCCS with prospective participants and provided marketing services.

The Arts Council funded food for artists on Friday night and Saturday morning and was catered by Barbara South. Artists were very appreciative of the food, the air conditioned get-away inside the PCCS building, and several expressed appreciation to the organizers' responsiveness to their needs.

Some of the best news of the day was that the Green Light Studio had its most lucrative show ever. PCCS artists were pumped! Thank you to all who supported and attended this spectacular event. See you next year.



Courtesy of Lane Ralph

The PC Mural Project

TL Ridgway

Putnam County, Indiana has become an important destination for artists far beyond our local borders. We have had an array of visiting artists over the years, and several have fallen in love with our natural landscapes and our diverse residents. They seem to come back time and time again, while some even decide to make our region the place they call home. The Greencastle Arts Council would like to encourage our residents to get to know some of the creative people that contribute to our communities.

The Putnam County Mural Project took many months to complete because of the extensive planning that goes into selecting and creating a permanent public art installation. Dedicated individuals volunteered their personal time because they care about Putnam County. They researched the most competitive way to raise the needed funds. They also worked with community leaders, organizations, and local businesses to ensure that the arts will remain on the minds of our people by placing something beautiful on a highly visible landmark. These volunteers coordinated the selection process to find an appropriate artist(s) and imagery that

could best represent various aspects of our region. Thank you to everyone that made this possible; big and small.

I had the pleasure of communicating with the muralist, Key Detail, about our communities' creative goals and the boundaries we must overcome to share important information through the arts. He was graciously willing to take the time to answer a few questions. Here is what he had to say...



Courtesy of Joel Bottom

What activities/objects/etc. inspire your work? Your creativity?

“I live in New York City and it is my biggest inspiration. It gives me energy and power, it pushes me to work harder and faster. My family and I travel a lot and I really like our intense life style. The new countries and cities also generate a lot of ideas in my head. My soul always needs new inspirations that’s why I can’t stay in one place for a long time.”

What sacrifices have you made for your art?

“Back in my country before our moving to the US I had very good career in architecture. I have studied and worked for a lot of years but decided to quit very spontaneous. But I have never regret.”

What is your artistic background?

“In my youth ages I was very interested in art. I wanted to be into art life and was fascinated by practicing and experimenting with different media. Then I studied architecture and worked as Project Architect in design of commercial and residential buildings for more than 7 years. Architecture influenced me so much and this experience is invaluable. This knowledge helps me to work with architectural drawings, surroundings, scale, color palette, light, etc. From another side my profession as a mural artist allows me to travel and see architecture all around the world.”

How has your (artistic)practice changed over time?

“Growing up in Minsk, (Belarus), I have been active on the street art scene since the 2000s, worked consistently towards developing my style. It is interesting to see how much my content has changed over the years. I experimented with stencil art, wheat paste, painted with acrylic paint on big walls and on small canvases. Now I focus on creating huge outdoor murals.”



Courtesy of Key Detail

Thank you to all the organizers, volunteers, and crowds of people that joined us at the Mural Block Party celebration. The Greencastle Arts Council sponsored a “mural painting” project that allowed anyone to grab a can of spray chalk and place themselves in the shoes-of-the-artists by creating imagery on Veteran’s Memorial Highway in front our beautiful mural.

For more information about the PC Mural Project, please visit <https://www.putnamcountymuralproject.org/>.

If you are interested in seeing more of this artist's work, please follow Key Detail at www.instagram.com/keydetail/ or www.facebook.com/KeyDetail1.

Key Detail Artist Statement

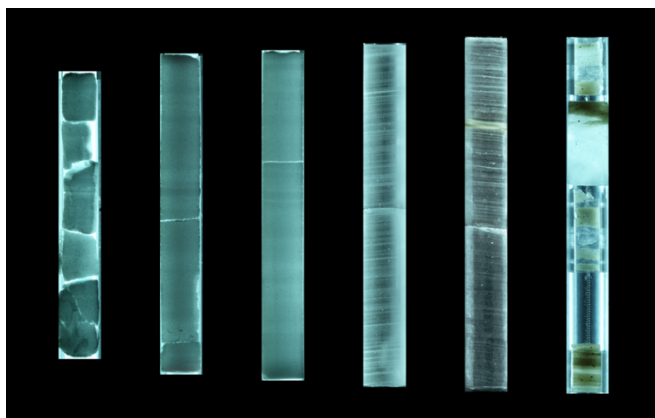
“My surroundings are my inspiration, my influences are everything I see, feel and experience. I offer works of art to the cities, in an attempt to create more beauty in minds and inspire those who see my work to look more carefully at the world around them.”

If you are interested in having a mural in your town by this New York based Artist, Key Detail, please contact <http://keydetail.org> or keydetailhello@gmail.com.

Bearing Witness

TL Ridgway

***BEARING WITNESS: 88 Cores + Paradise and Its Dark Side* is a visual art exhibition of place and time with a global and local connect. The exhibition was conceived around the central issue of our time; rapid, human-induced climate change. The growth and progress of humanity has driven the past 200 years of industrialization, and is the basis of fossil fuel energy production. It has had destructive and unintended consequence on the environment which sustains us. The record of rising temperatures in our atmosphere is unprecedented and has alarmingly accelerated rates exacerbated by natural forces of air, wind, fire, and water. Unless stopped, these forces will lead to environmental catastrophe.**



Courtesy of Martha Donovan Opdahl

This exhibition reminds us of what matters most to all of us—and that we care—which is essential for initiating dialogue and building trust to broaden our sense of urgency and shared capacity, to work together to create meaningful climate action.

Paradise and Its Dark Side is an exhibition of artworks by contemporary artists who reveal our local, glacier-carved landscape as we know it and live it here in fossil-strewn Putnam County. There is now evidence of something new and foreboding happening which threatens our paradise. Worse, it threatens our very survival. We risk losing it all. A dread, a feeling of things gone wrong, very wrong, our artists capture and reveal. We know what is causing this escalating change which we witness almost daily.

Participating local artists include; Clare Backer, Jerry Bates, John Berry, Garret L. Boone, David Herrold, Robert Kingsley, William Meehan, George Jo Mess, Lori Miles, Martha Donovan Opdahl, Barbara Timm, and Reid Winsey.

88 Cores is a time machine through 110,000 years of climate history as it descends slowly through the Greenland Ice Sheet. This frozen history informs our heated future. The video installation was created by Los Angeles based artist, Peggy Weil. Her video installation has been exhibited at fine art venues from New York to Los Angeles, and we are very lucky to have the opportunity to

view her work in our small community. *88 Cores* is part of a series of Weil's *Underscapes* and extended landscape portraiture to confront the deep time and deep space of climate change.



Courtesy of TL Ridgway

Ice cores drilled out of the Greenland ice sheet reveal previously inaccessible scientifically reliable data. Ancient winds, infused with pollen, pollutants, ash, organic and inorganic particulates carried debris from flowers and fires, foundries and volcanic eruptions, mixing with seasonal snowfall which compressed into banded layers of ice. These bands can be

counted and dated like tree rings. Ice cores are known as paleo-thermometers. Air bubbles trapped within the ice hold ancient air including gasses CO2 and methane providing an accounting of ancient atmosphere. They are the gold standard for indicating climate change for what they say about ancient atmospheric conditions dating back hundreds of thousands of years.

Curator Martha Donovan Opdahl

Opdahl's group exhibition brings the subject of climate change to the front of local conversation by highlighting breathtaking works of art, including creative local artists and a beautifully eerie film that showcases thousands of years of core samples by California artist Peggy Weil. The opening reception was held on October 6th at the Putnam County Museum and included guest speakers, live music, and plenty of conversation.



Courtesy of Rachel Curtis

This collection of work is not necessarily directed at causing a political battle and it is very relevant to the current global conversation. Greta Thunberg's heroic actions may seem far removed and we will all remember global leaders using this young girl's legitimate concerns as permission for verbal abuse. The California fires alone have displaced thousands of people and is responsible for devastating over 100,000 acres of American land. They are expected to have the hottest winter on record over the 2019-2020 calendar. Historical flooding has caused extensive damage to crops over the past few years from the Great Plains to the Midwest farmland and the 2019 figures will soon be posted (on websites like the NOAA) following the completion of this year's harvest. The tariff wars are not the only reason for food shortage and price increase.

You may think this has nothing to do with our local community, but it is the new reality. Growing up on a local farm, I can remember how the droughts of the late 1980's devastated my family and the ways that it plagued us for years to come. We were forced to make changes to the

way we lived and how we managed farm business. It took many years to recover, and yet here we are again, facing other climate obstacles.



Courtesy of Rachel Curtis

So how do we make realistic changes that improve our local environment and leave our children something worth having? Buy less plastic, glass & aluminum are more likely to be recycled and less likely to be shipped abroad, (or shipped back). Buy less food in individual packaging, and grow some of your own food, (maybe you can grow tomatoes and trade with someone in your neighborhood).

Spend less time clearing fence lines and allow wildlife to flourish in these unused areas of your property, (you can enjoy watching birds and honeybees). Donate your unwanted clothes to the local senior center storeroom so that they may raise money for their activities (maybe you will find the vintage dress or suit you were looking for while you are there). Carry a stainless-steel straw in your car so that you can skip the plastic one, turn your thermostat down, open the windows in the spring instead of using central air...the lists of easy changes are endless. Find the right combination to realistic fit your life. It's okay to start small and to keep it simple.

The whole point of Opdahl's fine arts exhibition is to bring awareness to our changing world and make us think about our own actions, as well as to spend a little time in our local museum enjoying this fascinating perspective of artists, (and not having to travel far away to do so). This exhibition is a true gift from Martha Opdahl's heart and is for the small community she cares about the most; our hometown.

BEARING WITNESS was curated by Martha Donovan Opdahl.. The exhibition is presented by the Putnam County Museum in partnership with the DePauw University Richard Peeler Art Center and by contributions from the Greencastle Arts Council and many local residents.

<https://www.putnamcountymuseum.org/exhibits>

PC Festival Choir Returns

Suzanne Hassler

After 17 years, the Greencastle Arts Council, DePauw School of Music, and the Putnam County Convention and Visitors Bureau are excited to bring back the Putnam County Festival Choir, a communitywide collaboration that is bringing together students and residents throughout the county through singing beautiful music.

Rehearsals are held weekly on Tuesday evenings from 7:30–9 p.m. in Room 1115 of the Green Center for the Performing Arts, located at 600 S. Locust Street on the DePauw University campus.

A sponsored project of the Greencastle Arts Council, no membership fees or auditions are necessary. People of all ages—and from all corners of Putnam County—who like to sing are welcome to join. Members of local church choirs or theatrical groups who wish to enhance their vocal skills may also take advantage of this weekly music instruction at no cost.

Founded in 1971, by former DePauw director of choirs Graeme Cowen, this community ensemble joined the student choirs for significant performances such as the annual choir-orchestra concert at the end of each spring semester.

The choir's last performance was Brahms's *Ein deutsches Requiem* in May 2002. Its next performance is scheduled for the DePauw School of Music's ninth-annual Holiday Gala on December 7th and 8th under the direction of current choral director Eric Schmidt.

“As a conductor, to me, of course, the music is at the heart of every choir,” Schmidt said. **“But beyond that, choral singing is something that goes to the very heart of our humanity and to our sense of community. When you sing, you express your soul in song. And when you get together with a group of other singers it becomes more than the sum of the parts. The idea of setting aside life's differences and literally speaking with one voice in perfect**

harmony is implemented through a choir in a powerful way. Music has a unique potential to bridge borders and to bring people together. With this group, I would like to invite residents of Putnam County to share the stage with our students at DePauw to experience the power of making music together.”

Bass-baritone Chris Wuster, a member of the choir in its earlier incarnation, has returned to sing with the ensemble this season. **“I enjoyed performing with the students and greatly appreciate Dr. Schmidt’s willingness to direct this community choir. Being surrounded by all that young talent while singing and performing is exhilarating, inspiring, and rejuvenating.”**



Courtesy of Putnam County Convention and Visitor’s Bureau

“One of the beauties of choral singing is that participation doesn’t require a big investment in an expensive instrument in order to begin,” Putnam County Arts and Culture director and GAC board member Suzanne Hassler noted. **“Everyone has a voice, and every voice deserves to be heard.”**

For the choir’s first rehearsal in October, 27 vocalists came ready to sing. By week three, the group had grown to 38 and was already receiving invitations to perform!

Anyone with scheduling conflicts this fall, who was unable to participate in the Holiday Gala, is welcome to join the choir when rehearsals resume on Tuesday, Jan. 28 (GCPA 1115). For its

spring concert on Sunday, May 3, the Festival Choir will perform Brahms's *Ein deutsches Requiem* (*A German Requiem*) with the combined DePauw University Orchestra and Choirs.

If you are interested in adding your voice to the ensemble or have questions, contact conductor Eric Schmidt via email at ericshmidt@depauw.edu.

Natasha Vidger

Bonne Soiree Artist Q & A

TL Ridgway

What activities/objects/etc. inspire your work; your creativity?

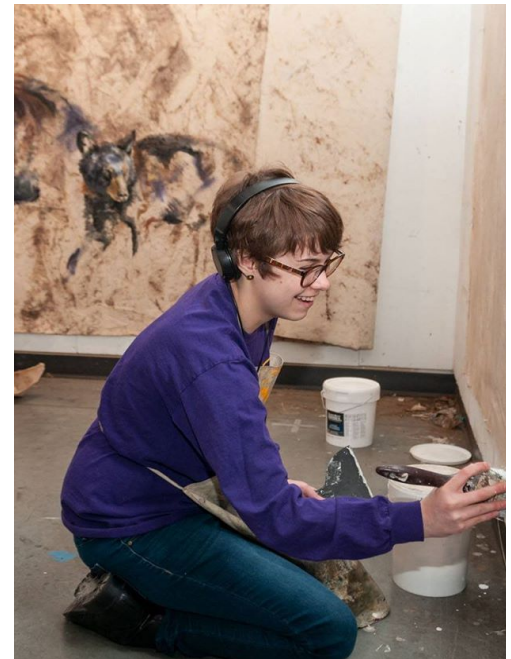
“Animals and nature inspire my work. I seek out opportunities to be in nature as often as possible. I also spend the time I am inevitably away from nature researching wildlife and reading about human-animal relationships.”

What methods or processes do you enjoy the most?

“I typically use oil or acrylic paint for my work. I am particularly drawn to the qualities possessed by oil paints. I also enjoy using drawing materials in combination with paint.”

Who are your biggest influences?

“I am influenced by April Coppini and Rebecca Haines’ work. Coppini and Haines are both women artists whose work focuses solely on the animal form. Often women artists have a hard time breaking into the art world so these two women are exceptionally



Courtesy of Natasha Vidger

inspiring to me. I also have been influenced by Jane Goddall and her work to understand animal behavior.”

How has your practice changed over time?

“My work itself has always revolved around human-animal relations. While pursuing my undergraduate degree I largely focused on animals navigating surreal and empty landscapes to comment on the ever changing, human dominated landscapes animals are forced to navigate. This led me to questioning the importance of backgrounds and the landscapes used to complement animal life. I found the traditional, romanticized landscapes often found in wildlife art to treat the animals in a decorative manner. At its core, I believe this traditional aspect of the genre is inaccurate in our modern era. The combination of these beliefs left me searching for a way to emphasize the importance and autonomy of the animal.

I began eliminating any form of background imagery and opted for plain black, white, or tan backgrounds. Despite the focus relying solely on the animal in these newer paintings I still felt something was missing.



Courtesy of TL Ridgway

My practice shifted enormously when I began aging my canvases with natural materials to create a nonobjective landscape. These “landscapes” consisted of real dirt and natural debris and I found this to be a more realistic translation of nature. I use this process of aging the canvases in combination with life sized animal imagery to fulfill my desire to accurately depict and focus on the animal. “

If you would like to see more works by Natasha Vidger, please follow on Instagram, or visit her website. <https://www.instagram.com/natashavidgerart/> or <https://www.natashavidger.com/>

And the Winners are...

Suzanne Hassler

During the month of October, the Greencastle Arts Council sponsored a free raffle for two gift baskets of art supplies and trick or treat goodies in conjunction with the Civic League's annual Halloween window decorating contest on the Courthouse Square.



Courtesy of Suzanne Hassler

With unexpected snowfall on the day of the big event, Main Street Greencastle's outdoor festivities was moved from our historical downtown to the Inn at DePauw, where more than 1000 Putnam County kids enjoyed plenty of trick or treating, scary photo ops and indoor activities, including the raffle.

The winner of GAC's first-prize gift basket was Krista Tippin, who came closest to correctly guessing the number of "Googly-Eyes-in-the-Jar" contest. She guessed 289. There were 296. In



addition to treats, the basket included a Strathmore sketchpad, 48-piece colored pencil set, 24-piece oil pastel set, graphite drawing pencils, pencil sharpener, and erasers.

The second basket— a candy apple kit, complete with fresh apples from Chandler's Orchard, caramels, nuts, sprinkles, apple chips and gummy worms—was won by the family of Kyla McKee.

Courtesy of Suzanne Hassler

The Council was thrilled by the generosity and creativity of our community partners—Chandler’s Orchard and Country Market, Eitel’s & Co. Florist, Greencastle Walmart, and the Putnam County Convention and Visitors Bureau—for the bounty of goodies and goodness contributed to creating the Halloween-themed raffle baskets.

2019 Tax-deductible Donations

It’s that time of year to think about tax-deductible donations. If you are interested in receiving a 2019 tax-deductible receipt, consider donating \$25.00 or more to the GAC. (All donations and requested receipts must be postmarked by December 31st, 2019 and include a mailing address to qualify for the 2019 tax year. Any funds received after this date will be marked for the 2020 tax-year.)

Please send donations & requests to PO Box 631, Greencastle, IN, 46135, or visit our webpage at www.greencastleartscouncil.org/donations.

If you have questions or concerns about donations, please contact Rachel Curtis at treasurer@GreencastleArtsCouncil.org.

Your Opinion Matters

Do you have knowledge or a skill that you would like to share with the Art Community?

What would you like to gain from the arts?

Get to know others, just like you. Please visit our Facebook page and start a positive conversation. We appreciate hearing from our members.

www.facebook.com/GreencastleArtsCouncil/

Greencastle Arts Council Membership

Are you, or someone you know, interested in becoming a member?

Want to give a gift that keeps giving?

A Greencastle Arts Council membership supports local events and encourages our community to explore and celebrate the arts.

Memberships:

Artist/Venue/Student – \$10

Basic – \$25

Patron – \$50

Elite – \$100

Lionhearted – \$500

The Greencastle Arts Council is a non-profit organization. We rely on the generosity of our loyal patrons for support, patrons just like you! Please consider donating so that we may continue to encourage creativity in Putnam County. (All proceeds go toward supporting local events and GAC expenses via PayPal, or check.)

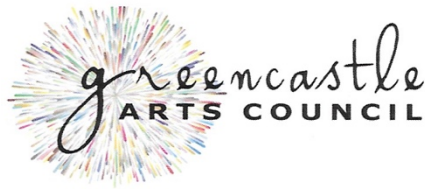
Contact GAC

PO Box 631

Greencastle, IN, 46135

Email us at: treasurer@GreencastleArtsCouncil.org

Or visit our webpage: www.greencastleartscouncil.org/donations



Annual Membership Levels*

\$10 Artist/Venue/Student
\$25 Basic
\$50 Patron
\$100 Elite

Love ART? Join today!

Name: _____

Address: _____

City, State, ZIP: _____

Email: _____

Membership Level/Donation Amount: _____



Check us out and join online at

greencastleartscouncil.org

or mail a check payable to Greencastle Arts Council to
PO Box 631, Greencastle IN 46135

Questions: greencastleartscouncil@gmail.com

**All membership levels are entitled to the same benefits - your generosity helps us better serve you and our community!*